

Community-Driven. Student-Focused. Referendum

Parents, community members, business owners, farmers, students, teachers, staff, administrators, and Board of Education members collaborated to develop a community-driven plan that will meet the challenges currently facing Hatton Eielson Public School and position it for future success. As a result, Hatton Eielson Public School Board of Education has placed a \$6.3 million bond referendum on the December 12, 2017 ballot.

Remember to Vote, Tuesday, December 12, 2017 from 9am - 7pm at the Hatton School

challenges

AGING FACILITIES AND DEFICIENT LEARNING SPACE

- 45% of building is between 83 and 109 years-old.
- Indoor air quality, lighting, noise, and technology infrastructure deficiencies.
- Education and technical career preparation has changed in 109 years.
- Lack of adequate space to accommodate multiple programs/functions.
- Shortage of physical education, assembly, and community/fitness space.
- Sends wrong message to attract/retain staff and students.
- Second floor stairs inaccessible for students who receive special education programs. Currently no space to relocate at ground level.

SAFETY AND SECURITY

- Lack of secure entrances create a potentially dangerous situation.
- Most of the building has no fire sprinklers.

proposed solutions

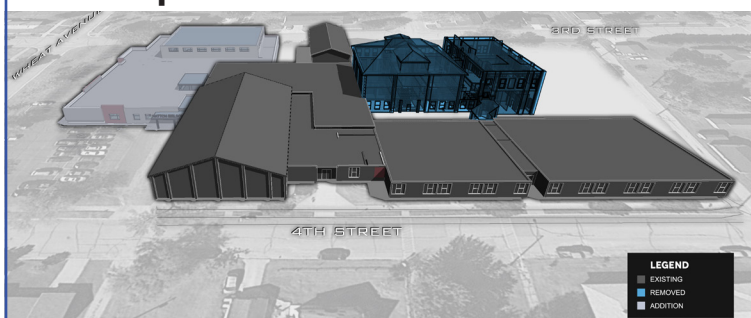
IMPROVES LEARNING SPACES AND OPPORTUNITIES TO PREPARE STUDENTS FOR SUCCESS

- Reconfigures space, improves function, efficiency and space utilization.
- Improves indoor air quality, thermal, lighting, noise issues, and technology infrastructure.
- New music room, gymnasium/cafeteria/kitchen, and community/fitness.
- Effective attraction/retention tool for students and teachers.
- Accessible special education programs provided at ground level.

SAFETY AND SECURITY FOR STUDENTS AND STAFF

- Main entrances re-configured so visitors must check in at office prior to entering. Electronic security monitoring at each exterior entrance.
- Fire sprinkler system throughout the building.

concept for addition and renovations



voting information

Early voting at the Hatton School
November 2 until December 11, 2017

- OR -

To Vote by Mail: Go to www.hattonk12.com. Fill out and mail the absentee/mail ballot application to the school district office at 503 4th St., Hatton, ND 58240. You will receive the actual absentee/mail ballot in the mail. Fill out the ballot, and either mail or deliver it in-person to the school district office between Nov. 2 and Dec. 11. Absentee/mail ballots must be postmarked no later than Dec. 11. Questions on voting by mail or early voting? Contact Business Manager, Roxanne Phipps at 701-543-3455 ext. 204 or email roxanne.phipps@k12.nd.us.

tax impact

Based on *Trill County averages*

2% low interest loan from Bank of ND saves \$1.2 million

Type of Property	True and Full Value	Estimated Annual Tax Impact
Residential <small>(average true and full value of a house in City of Hatton is \$72,871)</small>	\$70,000	\$152
	85,000	184
	100,000	217
	125,000	271
	150,000	336
Commercial	\$100,000	\$241
	200,000	482
	250,000	603
	500,000	1,205
Agricultural <small>(Average Ag Land Total)</small>	\$1,000	\$2.41
	1,100	2.65
	1,200	2.89
	1,350	3.25
	1,500	3.62

public meetings

- Wednesday, November 15, at 7 pm at the Hatton School
- Tuesday, December 5, at 7 pm at the Hatton School

two questions appear on ballot

Question 1: Referendum question to fund \$6.3 million project
Question 2: Increase debt limit from current 5% of assessed value of the taxable property of the school district to 10%



[facebook.com/hattonk12](https://www.facebook.com/hattonk12)

Questions?

Superintendent Kevin Rogers | 701-543-3455 ext. 202
kevin.rogers@k12.nd.us

Additional Project Information:
www.hattonk12.com